

Biotinylated Human IgE Protein

Cat. No. IGE-HM401B

Description

Source	Recombinant Biotinylated Human IgE Protein is expressed from HEK293 with His and Avi tag at the C-Terminus. It contains Cys209-Lys428.
Accession	P01854-1
Molecular Weight	The protein has a predicted MW of 27.8 kDa. Due to glycosylation, the protein migrates to 32-38 kDa based on Bis-Tris PAGE result.
Endotoxin	Less than 1EU per µg by the LAL method.
Purity	> 95% as determined by Bis-Tris PAGE > 95% as determined by HPLC

Formulation and Storage

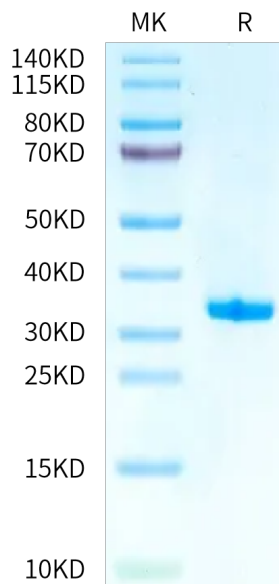
Formulation	Lyophilized from 0.22 µm filtered solution in PBS (pH 7.4). Normally 8% trehalose is added as protectant before lyophilization.
Reconstitution	Centrifuge the tube before opening. Reconstituting to a concentration more than 100 µg/ml is recommended. Dissolve the lyophilized protein in distilled water.
Storage	-20 to -80°C for 12 months as supplied from date of receipt. -80°C for 3 months after reconstitution. Recommend to aliquot the protein into smaller quantities for optimal storage. Please minimize freeze-thaw cycles.

Background

Immunoglobulin E (IgE) is well known for its role in allergic disease, the manifestations of which are mediated through its two Fc receptors, FcεRI and CD23 (FcεRII). IgE and its interactions with these receptors are therefore potential targets for therapeutic intervention, and exciting progress has been made in this direction. Furthermore, recent structural studies of IgE-Fc, the two receptors, and of their complexes, have revealed a remarkable degree of plasticity at the IgE-CD23 interface and an even more remarkable degree of dynamic flexibility within the IgE molecule.

Assay Data

Bis-Tris PAGE



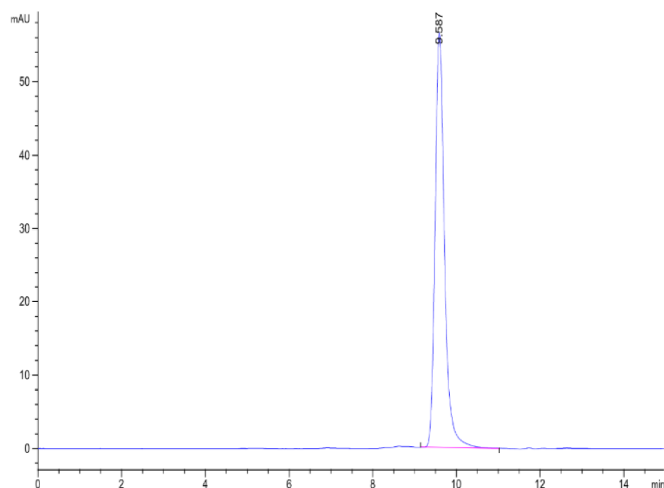
Biotinylated Human IgE on Bis-Tris PAGE under reduced condition. The purity is greater than 95%.

SEC-HPLC

Biotinylated Human IgE Protein

Cat. No. IGE-HM401B

Assay Data

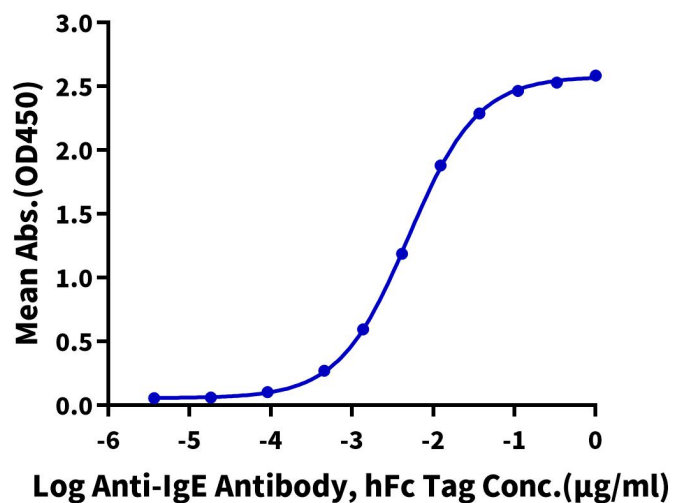


The purity of Biotinylated Human IgE is greater than 95% as determined by SEC-HPLC.

ELISA Data

Biotinylated Human IgE, His Tag ELISA

0.05 μ g Biotinylated Human IgE, His Tag Per Well



Immobilized Biotinylated Human IgE, His Tag at 0.5 μ g/ml (100 μ l/well) on the streptavidin precoated plate (5 μ g/ml). Dose response curve for Anti-IgE Antibody, hFc Tag with the EC50 of 5.0ng/ml determined by ELISA.